

ESTATE AUCTION

Gerald & Lois Ross • 17361 166th St. SE, Big Lake, MN 55309

August 13, 2008 at 5 PM

Preview 1 Hour Prior to Auction

Directions: Monticello, MN: North on Hwy. 25 from Monticello; turn left onto County Rd. 11 for 1/4 mile and right onto County Rd. 50 for 1 mile and turn left onto 166th St. SE and watch for Elsenpeter Auction signs!



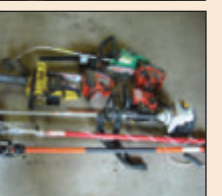
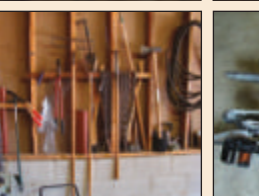
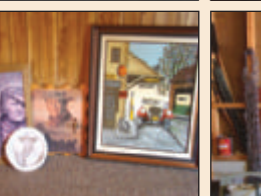
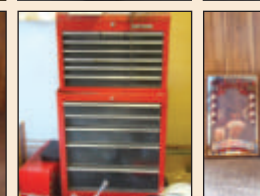
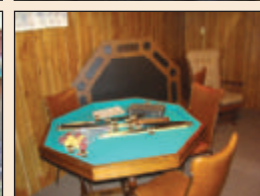
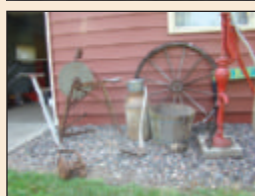
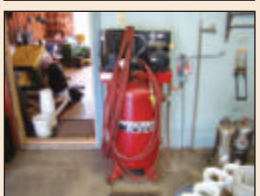
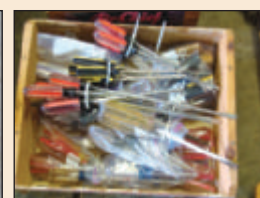
Antique Milk Tank
Antique Sausage Stuffer & Hard Fruit Press
Antique Pulley
Antique Edge Trimmer
Antique Hand Drill
Antique Wet Stone Sharpener
Antique Ice Tong
Fishing Spears
8' Windmill
12V Igloo Cooler
Assorted Coolers
Fan
Plumbing Snakes
Philips Magnavox TV & Stand
1991 Budweiser Collector Series Beer Steins
Clock and Clock Radio
Microwave
Refrigerator & Freezer
Sanyo TV & Stand
Camping Cook Kit
Fire Extinguishers
Rubber Maid Trash Cans
Hammock
Lawn Chairs
Brinkmann Smoker & Cooker
Gas & Charcoal Mini Grills
Pet Food Containers
Portable Electric Heater
Blatz, Stroh Light, Miller, Coors, Budweiser Electric Beer Signs
Cuckoo Clock
Stroh's Beer Steins
Stereo
Chess Set
Poker/Bumper Pool/Dining Room Table
Fireplace Screen & Log Grate

Patio Set: 4 Chairs & Umbrella
Hoover Vacuum
John Wayne Clock and Pics.
Grain Belt Mugs
(4) Bar Stools
Spacemaker AM/FM Radio
18-Qt. Roaster
(6) Chairs for Table Set
Electric Fireplace Logs
Flashlights
Expandable Clothesline
1991 12' Felling Trailer
John Deere Cab, Snowblower & Trac Vac
8HP Bagger
5HP Briggs & Stratton Front Tiller
Utility Cart
8HP Rebuilt Engine
Pull-Behind Fertilizer/Seeder
2000 Columbia Gas Golf Cart - New Clutch & Recently Serviced
2003 John Deere Push Mower
8HP LaFont Log Splitter
1989 420 John Deere Lawn Tractor
Yard Sprayer - Pull Behind
Weed Whip
Magna Force 220 5HP 44-Gal. Air Compressor
Craftsman 250-Amp Engine Starter & Battery Charger
Crowbars
Electrical 0-Meters
2-Speed Portable Band Saw & Blades
Wheel Grinder
Bench Grinders and Wheels
Screw Extractor Sets
Hacksaws
Vise Grips, Channel Locks, Pliers

Craftsman Toolboxes
Socket Sets
2-Ton Hydraulic Floor Jack
Tractor Sprinklers
Wash Brushes
Hand Electric Saw
Extension Cords
225-Amp Lincoln Arc Welder w/Welding Mask & Welding Sticks
Mitre Kit
Grease Guns
2-Lb. Hammers
Vises
Soldering Guns
10/2/50 Amp 50V Battery Charger & Starter
Skill Saw
Various Drills & Bits
Chisels
Floodlight
Crescent Wrenches
Drives, Chisels
Chain Binders, Log Chains
3-Ton Hydraulic Floor Jack
Ladders - 8', 10', 12' & 16'
Numerous Scoop, Spade, Scraper Shovels and Rakes
Hand Auger
Mosquito Fogger
Gas & Electric Chain Saws
Garage Shelves
Wheelbarrow
5HP Honda Pressure Washer
Settling & Oxygen Tanks
15" Craftsman Standing Drill Press
Wallpaper Tools
Craftsman 50w Mosquito Killer
Pipe Wrenches

Motor Oils & Funnels
Various Screwdrivers
32cc Craftsman Blower
Heavy-Duty Angle Drill
Scroll Saw
12-Gal. Shop Vac Wet/Dry Vac 2.25HP
Plastic and Cloth Tarps
Avalanche Roof Rake
(3) Shop Stools
Various Nuts, Bolts, Nails and Washers
Car Ramps
Breaker Bar, Extensions
Car Creeper
1 1/2-5 Gal. Gas Tanks
Pole Extension Chain Saw
Misc. Lumber
Brown New Roof Vents
Garden Hoses & Reels
Fence Posts
Coax. Cable
Large & Small Live Animal Traps
Turbo Roof Vents
Birdbath
Propane Heater for Fish House
7' Portable Fish House
Propane Lantern
Smelt Nets
Various Fishing Tackle, Minnow Buckets, Rods, Nets
Ice Fishing Poles

Dinner on grounds



Terms: Cash, Cashier's Check or Personal Check, and Visa or Mastercard. Nothing to be removed until settled for, settlement must be made by conclusion of auction. Everything sold "AS IS." You are responsible for your items after making purchase. Driver's license or proper ID required to register. Statements made by Auctioneer at auction take precedence over any printed material.

Picture Gallery Online at www.elsenpeterauctions.com



Paul Elsenpeter, Lic 86-88 • Mandy Elsenpeter, Lic 86-89

Al Elsenpeter, Lic 86-90

320-963-6272

P.O. Box 117 • Maple Lake, MN 55358

